

DISCOVERY

EYE FOUNDATION

~ FOUNDED IN 1970 ~

SUPPORTING WORLDWIDE EDUCATIONAL PROGRAMS AND EYE RESEARCH

FALL/WINTER 2007

DISCOVERY EYE FOUNDATION

FOUNDERS

Morris S. Pynoos*
Rita J. Pynoos

BOARD OF DIRECTORS

Jack L. Schoellerman
Chairman and President

Mario Antonini

Iris Cantor

Jon Pynoos, Ph.D.

Vice Presidents

Madeline Einstein

Secretary

M. Cristina Kenney,

M.D., Ph.D.

Assistant Secretary

Joan Seidel

Treasurer

Anthony B. Nesburn,

M.D., F.A.C.S.

Medical Director

David Boyer, M.D.

Judy Carroll

Cliff Einstein

Beverly Gelfand

Arnold W. Klein, M.D.

Koni Conen Leiderman, Ph.D.

John Parrish

Allen A. Posner, O.D.

Rita J. Pynoos

James J. Salz, M.D.

Barry Smooke

Sylvia Weisz

*Deceased

MISSION STATEMENT

Discovery Eye Foundation exists to facilitate the development of cures and improve patient care through corneal and retinal research and educational programs for eye disease.

"A NIGHT FOR DISCOVERY" GALA EVENT HONORS SUPPORTERS AND ADVOCATES OF DISCOVERY EYE FOUNDATION



On Thursday, October 11, 2007 over 300 people crowded into the Crystal Ballroom of the Beverly Hills Hotel to celebrate the successes of the Discovery Eye Foundation (DEF) over the past thirty-seven years and also to recognize some incredible people committed to the field of vision research and treatment. Ms. Beverly Gelfand and Ms. Sue Marshall were the co-chairs of "A Night for Discovery" which raised over \$250,000 to support research, patient outreach, and education.

During the evening those in attendance were treated to the premiere of a new film about Discovery Eye Foundation entitled, "Discovery". This inspiring documentary, produced by DEF Board member, Cliff Einstein, highlighted the research being accomplished in the DEF sponsored laboratories housed at the University of California, Irvine.

The climax of the evening was the presentation of the **2007 Vision Awards**. Honored for their dedication, commitment and generosity were:

Iris Cantor, Philanthropic honoree

As chairman, president and co-founder of the Iris and B. Gerald Cantor Foundation, Iris Cantor has dedicated nearly three decades to advancing a variety of medical, education and cultural organizations and causes through philanthropic support. Her twin passions for women's health care and the visual arts, in particular, have driven her to establish comprehensive women's health centers in California and New York, and have earned her a place as a trustee of several museums, including the Los Angeles County Museum of Art and the Metropolitan Museum of Art.

Mrs. Cantor has been a member of the Discovery Eye Foundation Board of Directors and a major supporter of the organization's work since the 1980's. Mrs. Cantor and her late husband, B. Gerald Cantor shared a belief in the need to support advances in eye research due to Mr. Cantor's longtime struggle with diabetes and his resulting vision loss. Through support spanning more than two decades, the Cantor Foundation established the Iris and B. Gerald Cantor Diabetic Eye Research Program and Laboratory at UCI, which has been responsible for important advances in eye research and

treatment including the development of a non-surgical procedure for treating vitreous hemorrhage.

James V. Mazzo, Industry honoree

James (Jim) V. Mazzo is Chairman, President and CEO of Advanced Medical Optics (AMO) where he has focused the energies of more than 4,200 employees around the globe on a common mission: the discovery and delivery of innovative vision technologies that optimize quality of life for people of all ages. Mr. Mazzo has been a member of the AMO Board of Directors since 2001. He has served as President and CEO from AMO's inception through May 2006, at which time he also became the Chairman of the Board. With AMO, Mr. Mazzo actively works with federal, state and local elected officials to address a variety of issues that impact the eye care and medical device industries.

AMO has long been a supporter of the Discovery Eye Foundation, and Mr. Mazzo provides DEF with a valued perspective on current innovations and future possibilities for vision technology. As the Chair of the steering committee for the proposed Eye Institute at the University of California, Irvine he works closely with Dr. Tony Nesburn, Medical Director of DEF and DEF Board Chairman Jack Schoellerman to help ensure that this project becomes a reality.

Anthony B. Nesburn, M.D., F.A.C.S., Medical honoree

An internationally respected eye surgeon, educator,



Anthony B. Nesburn, Iris Cantor and James Mazzo

continue to page 2

SEEING THE STARS

COUNTRY MUSIC SINGER, ALAN JACKSON, SUPPORTS DEF

When the Discovery Eye Foundation opted to hold an online eBay auction in conjunction with its 5th Annual Golf

Tournament no one knew they would actually be seeing stars up close and personal. The online auction, Seeing the Stars, raised almost \$10,000 in support of eye research at the Morris S. Pynoos laboratories at the University of California, Irvine. The auction featured donated items from an array of celebrities, DEF friends, and corporate sponsors.

One extra special auction item was provided by Alan Jackson, the country music icon who has won over 95 awards for his singing and songwriting. Mr. Jackson donated a pair of VIP tickets and a backstage meeting to his sold out concert in Irvine, CA. This one item raised several thousand dollars in our auction. When another fan, and potential donor, offered to match the first contribution if another set of tickets could be provided, Mr. Jackson graciously made the same opportunity available for his sold out show in Albany, New York.

Showing that his heart is as huge as the numbers of people he draws to his concerts, Mr. Jackson stated: "I'd like to dedicate my auction in memory of my father, Eugene Jackson. He lived with the eye disease, Macular Degeneration, for several years before he passed away. My family and I look forward to the day when we can find a cure for this debilitating disease."

The two packages, each of which included two concert tickets and back stage passes to meet the country music star, raised \$5,525 in support of DEF.

"This was a wonderful opportunity to raise additional funds in support of eye research," says DEF Medical Director Anthony Nesburn, M.D. "It is made all the more meaningful because of Mr. Jackson's personal commitment to eye disease research. I hope that Mr. Jackson and his colleagues will continue to be a part of DEF and support our outreach and research efforts to help those with this terrible disease."

Discovery Eye Foundation will be having another online auction in July, 2008 in conjunction with our annual golf tournament. Watch for announcements for exciting donating and bidding opportunities!!

continued from page 1

lecturer, researcher, Dr. Nesburn has served as Medical Director of the Discovery Eye Foundation since its founding. "Dr. Tony" is beloved by his many grateful patients and highly respected by his medical peers as a Doctor's Doctor. He is repeatedly included in Outstanding Medical Specialists in U.S., The Best Doctors in America and America's Top Doctors.

Dr. Nesburn, an LA native and UCLA magna cum laude graduate, earned a cum laude MD degree and received his extensive post-graduate research and ophthalmology training at Harvard Medical School. After returning to Southern California in 1968, he joined his father, Dr. Henry Nesburn, in private practice of ophthalmology.

He has always had a passion for research and has devoted over half of his time to patient-oriented laboratory research and clinical research projects. He has been awarded ongoing NIH research support throughout the ensuing years that has resulted in many important sight-saving scientific and clinical advances and over 180 publications in peer-reviewed scientific journal.



Inspiration and entertainment during the evening was provided by **Mr. Tom Sullivan and Ms. Stefanie Powers**. Mr. Sullivan who has been blind almost since birth is recognized for his work as an author, an actor, a musician and entertainer, a television news correspondent,



Award Event Committee Members, front left to right, Dr. Tony Nesburn, Cliff Einstein, Janet Salter, Dr. Jim Salz, Sue Marshall, Louise Boley, Barry Smooke, Mandy Einstein, Beverly Gelfand, Raimie Kriste.

an athlete and a motivational speaker. As a special correspondent for ABC's Good Morning America, Tom gave touching and insightful reports inspiring millions of Americans each morning.

Ms. Powers began her career at age 15, dancing for Jerome Robbins. Under contract to Columbia Pictures, she appeared in 15 films, among them Experiment in Terror, The Interns, and McClintock! After her first television series, "The Girl From U.N.C.L.E.," came 12 more films, over 20 mini-series stage productions and the long-running "Hart to Hart." Powers will bring her new one-woman show, One from the Hart, to the Orange County Performing Arts Center in November.



FROM THE DIRECTOR



Anthony B. Nesburn, M.D. F.A.C.S.
Medical Director

Dear Friends:

This has been a very exciting year for Discovery Eye Foundation! Through this newsletter we are pleased to be able to tell you what we have been accomplishing during the latter half of 2007. We are also thrilled to highlight some of the new opportunities we are exploring and to tell you about some interesting possibilities that may provide additional treatments for persons with debilitating eye diseases.

Throughout the evolution of Discovery Eye Foundation the cornerstones of our organization have always been our excellent patient education and outreach programs and our dedication to pursuing groundbreaking research that fosters enhanced patient care. In this issue of our newsletter you will be able to read about what we have been doing in both of these areas to ensure there is better understanding, support and treatment of retinal and corneal diseases.

We are so grateful for the contributions we have received through the years from donors to all of our programs and from our corporate and foundation partners, some of whom are highlighted in this edition of our newsletter. Your involvement has enabled us to accomplish a great deal and we are thrilled by the possibilities this provides for us to develop a better understanding of retinal and corneal diseases. We hope this increased understanding will produce new, innovative treatments for people with devastating eye conditions.

Because of all of you, the future of Discovery Eye Foundation looks even brighter than ever as we move into the holiday season and the upcoming New Year. Thank you very much for all you have done to make our work here possible. We are blessed to be able to help improve the quality of life for people around the world.

We wish you and your family a wonderful holiday season and a healthy and happy 2008!

Sincerely,

Anthony B. Nesburn, M.D., F.A.C.S.
Discovery Eye Foundation, Medical Director

**JUST DIAGNOSED
WITH KERATOCONUS?
MOVING TO
A NEW CITY OR
GOING ABROAD?**

**THE NKCF
REFERRAL
SERVICE
CAN HELP!**

One of the most appreciated services provided by the National Keratoconus Foundation is our Referral Service. Often, when people receive a diagnosis of Keratoconus it is difficult for them to find an eye care provider who has experience treating people with this condition and fitting the specialized contact lenses that are needed. In today's mobile society often families are transferred to another city or country for their job and it may be difficult to find a practitioner to treat them.

**NEVER FEAR...
THE NKCF REFERRAL
SERVICE IS HERE!!!**

Throughout the year NKCF receives many calls and email messages from people trying to find help. NKCF Referral Service is provided to Keratoconus patients and their families at no charge and includes contact information so you can find:

- Ophthalmologists who are Board Certified in Ophthalmology and Fellows trained in Cornea and External Eye Disease.
- Optometrists who are Diplomats of the Cornea and Contact Lens Division of the American Academy of Optometrists (AAO)
- Contact lens fitters who are Fellows of the Contact Lens Society of America

We can provide you with free referrals here in the United States as well as in countries around the world. We also can help coordinate services with international Keratoconus groups in the event you need a KC specialist while traveling abroad.

For help locating a KC specialist you may reach us via telephone at (800) 521-2424 or via email at info@nkc.org

NKCF REACHES AROUND

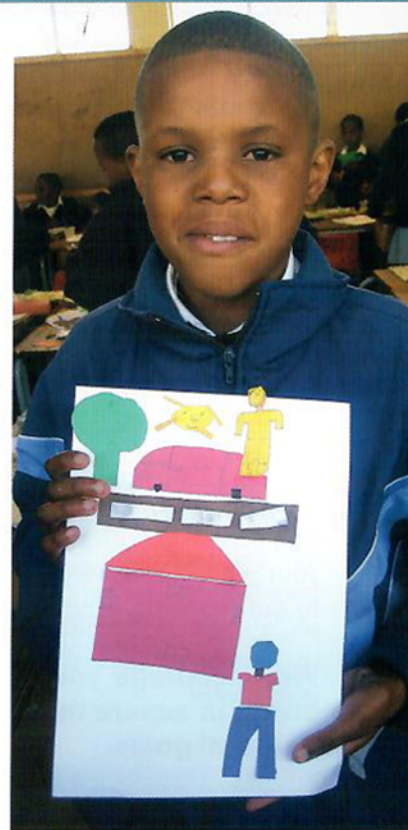
THE WORLD TO HELP ONE YOUNG PATIENT

Those of us living in the United States don't often think about what would happen if we did not have local hospitals and access to quality medical advice and care—we just take this for granted. However, in South Africa where **Vuyo Mkalipi**, an 11 year old boy lives, it is not so easy to obtain or afford treatment. When that treatment includes the diagnosis of Keratoconus and a cornea transplant for both eyes, it is next to impossible.

Through the dedication of John Lombardo and volunteers from ArtWorks for Youth, a non-profit organization in New York City, who were in South Africa teaching art at the school Vuyo was attending and information and referrals provided by Cathy Warren, Executive Director of the National Keratoconus Foundation, Vuyo was able to travel to New York and receive his transplants and medical care. This treatment was provided almost totally without cost to him or his family at Long Island College Hospital in Brooklyn. Dr. Michael Ehrenhaus, a corneal surgeon and a longstanding member of

the NKCF physician referral service, performed the surgeries without charge and was instrumental in helping to put all the pieces together so this young man could regain his sight.

Vuyo returned home to South Africa earlier this year and his mother and twin sister were waiting for him at the airport. Because he had gained weight while in New York, (perhaps due to an affinity with hot dogs, or as he called them "NY franks in a bun") his mother did not recognize him when he got off the plane. However, Vuyo didn't recognize his family either, because now he could see them much more clearly than when he left them.



MDP AROUND THE WORLD

HELPING MACULAR DEGENERATION PATIENTS

Did you know...that one in every three Americans over age 75 has signs of age-related macular degeneration (AMD)? More people in their early 50's are being diagnosed than ever before.

MACULAR DEGENERATION PARTNERSHIP ACTIVITIES ACROSS THE GLOBE

London, England – The Royal Society of Medicine recently analyzed several websites addressing issues related to AMD. They were evaluating these websites based on the information provided on the site, their accessibility and ease of understanding. This prestigious group ranked www.AMD.org as the #2 site on the web. We couldn't be more proud! If you look for AMD information on the Internet, your search will yield thousands of results, but you'll usually see AMD.org in the top group. If you want to read more about this study, it was published in the October issue of the Journal of the Royal Society of Medicine.

Bethesda, MD We are very excited to be involved in two important projects that have potential for far-reaching impact. MDP has been invited to join the AMD Working Group at The National Eye Institute. The goal of this Working Group is to develop a broad new national education program that would be available to everyone at risk for AMD, patients who have been diagnosed with this disease, and their families. The materials being developed in conjunction with this group should better help everyone understand and cope with the disease as well as find resources.

We are also pleased to be a member of a steering committee of AMD Alliance International working to identify "best practices" in AMD education. The members of this committee are charged to determine the best ways to reach people with information about the disease and to determine the methods that will truly make a difference. The result should lead to more effective educational materials and enhanced advocacy programs.

Boston, MA Twenty-five thousand people, age 50 and over, came to Boston this fall for the national AARP Annual Meeting, Life@50+. The Vision Pavilion was bustling with people looking for new information about eye diseases to help them better protect and improve their vision as they age. MDP had a booth to provide

information alongside other vision organizations and companies. Attendees participated in hands-on demonstrations of assistive devices and other new modalities to help improve sight as we age.

One of the highlights of our booth was the Marigold Seeds (yes, the flower!) contributed by Chrysantis. Everyone seemed to enjoy receiving these while also learning about the importance of lutein and zeaxanthin in the diet and how helpful these nutrients are to healthy eyes. MDP held an exciting raffle at the conference and we want to thank our generous sponsors: Fantas-Eyes, NYS Collection, Enhanced Vision and OTT-LITE. Next year, in Washington DC, AARP celebrates its 50th anniversary – the same age as we recommend you getting a baseline dilated eye examination to check for AMD.

New Orleans, LA It may be hard to imagine being in the middle of twenty thousand doctors and other eye professionals, but that is exactly what occurred at the recent American Academy of Ophthalmology conference in New Orleans. Representatives from MDP attended this conference to obtain up to the minute information about AMD treatments, research and resources so we are able to share this information with everyone who contacts us. It was very exciting to produce and distribute our free email newsletter, *AMD Update*, online each day while attending this very important meeting. Patients and their families were able to get the same information their doctors received, almost at the same time, to help them make informed decisions about their care.

Southern California – Here in Southern California, where our Macular Degeneration Partnership is located, events closer to home also get some of our time and attention. We have expanded our outreach to Orange and Ventura Counties and have had a great response. Our Director, Judi Delgado, has made presentations to senior centers, community organizations and hospitals in the area including: Center for Healthy Aging, Redondo Beach Senior Center, Ezra Center, Centinela Hospital and others. "It was wonderful to sit face-to-face with so many people and present information and answer their questions", says Ms. Delgado. If you have a group in the Los Angeles area and would like a speaker to discuss age-related macular degeneration, contact us at 310-623-4466.

SUPPORT DEF, MDP, AND NKCF THIS HOLIDAY SEASON BY SHOPPING ONLINE

There has never been an easier way to support the Discovery Eye Foundation (DEF) and its outreach programs the National Keratoconus Foundation (NKCF) and Macular Degeneration Partnership (MDP). After all, who wouldn't appreciate the convenience of accessing all of their favorite stores from the comfort of their home so they don't have to fight the crowds this holiday season?

Here is an easy and fun way to support our programs. We recently registered as a designated charity with iGive.com and iBakeSale.com, two online organizations designed to boost support of worthy causes and organizations through giving a percentage of sales to charities. These websites partner with a wide variety of retail stores, hotels and service providers to boost merchant sales while providing support for non-profit organizations.

iGive.com channels as much as 26% of each purchase made through online merchant partners to registered charities and local organizations; iBakeSale.com, allows participants to designate up to 8% of the proceeds from each online purchase to registered organizations.

iGive.com's over 600 online merchant partners include Nordstrom, Land's End, eBay, Westin Hotels, United Airlines, and Macy's and many more! iBakeSale.com is quickly growing its online partners, which currently include WalMart, Linens-n-Things, Nordstroms, Marriott, and Enterprise Rent-a-Car.

Friends of DEF, MDP, and NKCF who want to participate in the iGive.com and iBakeSale.com effort should go to www.iGive.com and www.iBakeSale.com and choose the Discovery Eye Foundation, Macular Degeneration Partnership, or the National Keratoconus Foundation as their designated recipient and start holiday shopping early!!

Once the donor is registered with the site, they will have one-step easy access to hundreds of online stores. After purchases are made, iGive.com and iBakeSale.com will direct funds to the designated recipient. DEF, MDP, and NKCF will be informed of all donations made and will send donors thank you letters for their tax returns as appropriate.

"This is probably the easiest way our donors can support the eye research and patient outreach being done by MDP, NKCF and DEF," says Catherine Warren, Executive Director of NKCF. "Every dollar spent will make an impact in the life of someone affected by KC or other types of eye disease. Just think, your next purchase could make the difference in finding an effective new treatment for eye disease or could allow our newsletter to reach a patient in need of support and information."

So, with the holidays right around the corner – what are you waiting for? Register with iGive.com and iBakeSale.com and start supporting the important work being done by DEF, MDP, and NKCF!

DISCOVERY
EYE FOUNDATION

MDP
Macular
Degeneration
Partnership

NKCF
NATIONAL KERATOCONUS FOUNDATION



PAC-ORB CONFERENCE PROMOTES COLLABORATIVE PARTNERSHIPS

In September, 2007, the Discovery Eye Foundation (DEF) co-hosted the Pacific Regenerative Biology Conference (Pac-ORB). The conference provided a significant opportunity for vision scientists and researchers from around the world to meet and exchange information regarding their work involving regenerative and developmental biology and stem cell research.

"The conference provided a broad brush approach to scientific study about the field of ocular regenerative medicine" explains James V. Jester, M.D., Professor of Ophthalmology, University of California, Irvine, Pac-ORB Co-Chair. "There were over 80 scientists from around the world in attendance so this was a very international arena to promote the exchange of ideas and information."

The two-day Pac-ORB conference focusing on regenerative biology, a newly emergent field that brings together developmental/stem cell biology, gene therapy and gene regulation, is held every two years. Combined, the three fields hold tremendous promise for insight into the permanent correction of genetic, malignant, and degenerative diseases through the renewal of affected tissue.

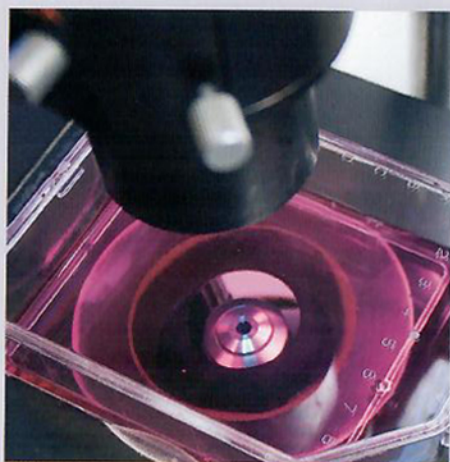
According to Dr. Jester, one of the highlights of the conference was keynote speaker Nobel Laureate Murray Gell-Mann, Ph.D. (1969, Physics), who gave a provocative presentation during the opening session.

His talk, entitled "Getting Creative Ideas", motivated the attendees to think outside what they might normally consider to be possible in their research and in their lives.

A presentation made by Jane Sowden, Ph.D. from University College in London was chosen as one of the best posters or talks at the conference. Her work centers on repairs to the retina using photoreceptor precursors, or in more lay terms "stem cell transplants". She showed the kinds of cells that can differentiate into rods and cones to possibly cure retinal diseases in the future.

Another outstanding presentation was given by Connie Cepko, Ph.D. from Howard Hughes Medical Institute at Harvard. Dr. Cepko has been researching genetic and genomic approaches to photoreceptors and diseases of the eye.

Dr. Jester was enthusiastic about the success of this gathering. He stated "this meeting provided an opportunity for ocular regenerative biologists around the world to gather, see and hear about the most recent findings in retina, cornea, lens and ocular tissue studies including state of the art stem cell research and studies in regenerative medicine. Relationships formed at this meeting will encourage multi-institutional collaborations and facilitate new research breakthroughs."



WAYS TO GIVE TO

DISCOVERY EYE FOUNDATION

There are many different ways you can make a charitable contribution. Discovery Eye Foundation is a 501(c)3 non-profit organization. In all cases your contribution will receive the maximum tax deduction allowed by law. You may direct your gift to Discovery Eye Foundation, to Macular Degeneration Partnership or National Keratoconus Foundation, or to our research programs at The Morris S. Pynoos Eye Research Laboratories at University of California, Irvine.

We encourage you to talk with your tax advisor or estate planner about your plans for charitable giving to ensure that they are involved in helping you make the best choices for your philanthropic and financial goals.

Cash

A cash gift—which can be made using a check or credit card—is the simplest way of making a charitable contribution. Cash gifts are fully deductible for federal income tax purposes. The maximum deduction in one year is limited to 50 percent of the donor's adjusted gross income. Unused deduction amounts exceeding this limit can be carried forward for up to five more years.

Appreciated Securities

Gifts of appreciated securities—stocks and bonds, including stocks in closely held companies—provide important tax advantages to the donor. The full fair market value of the donated appreciated securities is fully deductible as a charitable contribution for federal income tax purposes. Unused deduction amounts exceeding this limit can be carried forward for up to five more years. In addition, the donor does not pay federal capital gain tax on the appreciated portion of the gift.

Real Estate

A gift of real estate can provide many tax advantages. Gifting a residence, vacation home, commercial building, ranch land, or vacant property can also provide lifetime income. Please contact our staff to discuss the details of such a gift.

Retained Life Estates

The donor can contribute a private residence, vacation home, or farm while retaining the right to live in and use the property. The donor may receive a generous income tax deduction for such a gift.

Bequests

An excellent way to provide a gift after your life is by means of a bequest in your will or living trust. Setting up an endowment in your family's name to support Discovery Eye Foundation, National Keratoconus Foundation, or Macular Degeneration Partnership, is a wonderful way to continue to support your philanthropic priorities in perpetuity.

Retirement Plan Assets

Using IRAs and other retirement plan assets is a farsighted and thoughtful way to make a charitable contribution. It provides the donor a number of significant financial and tax advantages. Unlike many assets, retirement plan assets are potentially subject to both income and estate taxes. Naming Discovery Eye Foundation, National Keratoconus Foundation, or Macular Degeneration Partnership as the beneficiary of a retirement plan—including IRAs, 401(k)s, and profit sharing plans may possibly eliminate estate and income taxes in some cases.

ANYONE AGE 70 1/2 AND OLDER USE YOUR IRA TO MAKE A GIFT!!!!

The Pension Protection Act of 2006 was signed into law by Congress in August of 2006. This act allows those persons aged 70 1/2 or older to make charitable donations of up to \$100,000 directly from an IRA or other retirement fund to a non-profit organization without paying a penalty for using this money.

However, there may be other tax or financial considerations and we recommend you speak with your financial advisor about this as soon as possible because this benefit will expire at the end of 2007.

Life Insurance

A gift of life insurance is another way to make a substantial contribution. By assigning ownership to The Foundation, the donor can receive a tax deduction for the cash value of the policy and the premiums paid each year.

Bargain Sales

With this type of gift the donor sells an appreciated asset, usually real estate, to The Foundation at a discount or below market value. The gift amount will be the difference between the fair market value and the cash received in exchange for the gift.

Gifts that Provide Income

There are several ways to make a charitable gift that will provide you with income during your lifetime. Please call the Foundation if this is something you are interested in doing to discuss the possibilities.

Gifts that pass an asset on to heirs - Charitable Lead Trusts

The Charitable Lead Trust provides income to The Foundation for a specific period of time and then distributes the remaining assets to the donor or others designated by the donor. There can be significant estate tax savings with this type of gift.



NON-PROFIT ORGANIZATION

Discovery Eye Foundation (DEF)

is a 501(c)3 dedicated to finding cures and treatments for corneal and retinal eye diseases. It supports scientists participating in groundbreaking eye research particularly in the areas of diabetic retinopathy, macular degeneration, ocular herpes, keratoconus and other sight threatening conditions.

DEF also supports two excellent educational programs with world-wide reach, Macular Degeneration Partnership (MDP) and the National Keratoconus Foundation (NKCF). These programs uniquely serve a growing population affected by eye disease with opportunities for Internet interaction, free printed educational materials and telephone access to a healthcare professional.



~ FOUNDED IN 1970 ~

8733 Beverly Blvd. Suite 201
Los Angeles, California 90048

NON-PROFIT ORGANIZATION
US POSTAGE
PAID
LOS ANGELES, CA
PERMIT NO. 38190



DISCOVERY EYE FOUNDATION EVENTS

TEEING OFF FOR VISION!

2007 DEF GOLF TOURNAMENT A CLEAR SUCCESS

The fifth annual Discovery Eye Foundation Golf Tournament was held on Monday, July 23, 2007 at the Monarch Beach Golf Links in Dana Point, California. Approximately 90 golfers had a great time while contributing to a five-year total of over \$100,000 to support research at the Morris S. Pynoos Eye Research Laboratories at the University of California, Irvine.

SAVE THE DATE

FOR NEXT YEAR'S OUTING - JULY 21, 2008!!!!

The 6th Annual DEF Golf Tournament will be in a new, very exciting location and will be held on July 21, 2008 at the Newport Beach Country Club in Newport Beach, California. Featuring sparkling views of the Pacific Ocean and Newport Bay, the Par 71 private course ensures a spectacular day of golf. Proceeds from the event will fund eye research at the Morris S. Pynoos Eye Research Laboratories at the University of California, Irvine.

Start practicing now for a great day of golf. Check your mail for more details soon!!



FOR ADDITIONAL INFORMATION ABOUT SPONSORSHIP OPPORTUNITIES, PLEASE CALL THE DISCOVERY EYE FOUNDATION AT 310-623-4466.